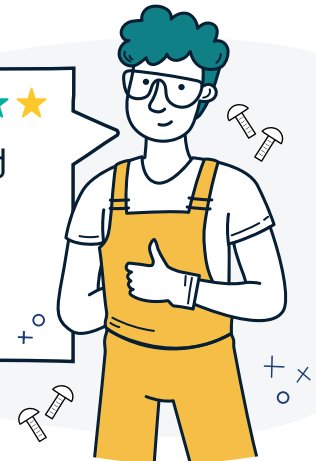




ALPAL User Guide



The ALPAL can be assembled
by 2 trained people in under
90 seconds.



The ALPAL arrives in flat-packed form.
The top ring housing the 12 load-bearing struts
is nestled securely on top of the pallet deck.



To begin the assembly, the struts and top ring must be lifted or removed from the pallet deck.



Ensure there is no residue inside of the strut cavities prior to seating of the struts.

The 4 corner struts are inserted through the slits in the internal corners of the bag and placed upright into the corner slots of the pallet base.



The remaining 8 struts are placed into the remaining slots on both the long and short side of the pallet deck and outside of the bag. This serves to contain the product and offer additional structural support under load.



With the struts in position in the pallet deck and the bag in place, the top ring can now be placed onto the upright struts. In fitting the top ring, ensure it is fitted snugly atop of all 12 struts and tap down lightly with a rubber mallet to ensure a tight and secure fit.



The final step is to secure the Velcro straps fitted to the bag. Pull tightly on the straps and secure the Velcro over the top ring.



The ALPAL is now assembled and ready for use.