

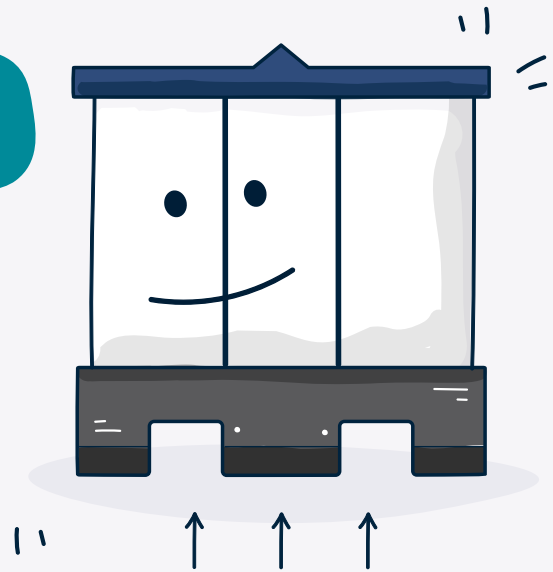
ALPAL 110H

Standard Height with stiffeners in the pallet base for increased load capacity



Hi, I'm ALPAL.

I'm stronger!



Height	43.3 In. / 1100 mm
Width	39.4 In. / 1000 mm
Length	47.2 In. / 1200 mm
Collapsed Height	8.4 In. / 215mm
Empty Return Ratio	5:1
Volume	32.3 cu. ft. / 900L
Stacking and racking Load Capacity	2,204.6 lbs / 1000kg
Stacking static	1 + 5
Maximum dynamic load on bottom container	11, 795 lbs / 5,250kg
Tare Weight	110 lbs / 50 kg
40' Trailer full	40
40' Container collapsed	264
Operating Temperature Range	-4 deg to 104 deg Fahrenheit / -20deg to +40 deg celcius